



biolabs
a **BioAgilytix** company



360biolabs are a specialised contract research laboratory

With a team of world class biologists and chemists



360biolabs are a specialised contract research laboratory

Providing laboratory support for clinical trials (Phase I-IV)



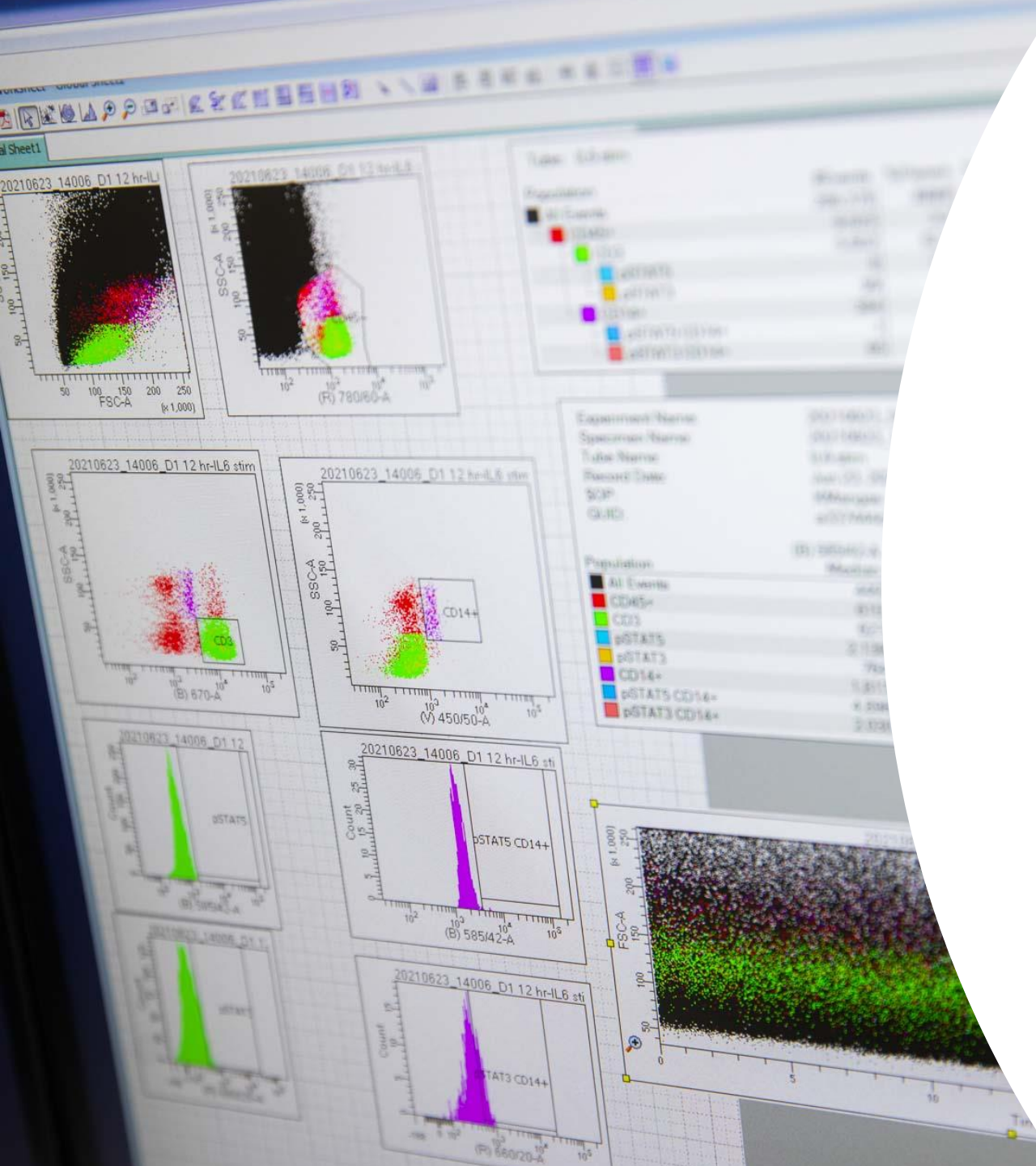
360biolabs are a specialised contract research laboratory

Development of new therapeutics, vaccines and diagnostics



**360biolabs are a specialised
contract research laboratory**

**In a quality-assured
environment**



**The 360biolabs
advantage**

**PK and PD
in the same
laboratory**

Ability to develop
client-specific assays
not available elsewhere



**The 360biolabs
advantage**

Quality systems

Internationally
recognized GLP, GCP,
ISO/IEC 17025

ICH/FDA/EMA
compliant assay
validation and reporting



**The 360biolabs
advantage**

**Expert, industry
experienced team
with a proven track
record**

We've been in our
clients' shoes



**The 360biolabs
advantage**

Communication and flexibility

Responsive, rapid
turnaround on quotations,
data transfers and reports



**The 360biolabs
advantage**

**“Every sample counts”
mindset**

Delivery of high-quality data,
on-time, every time

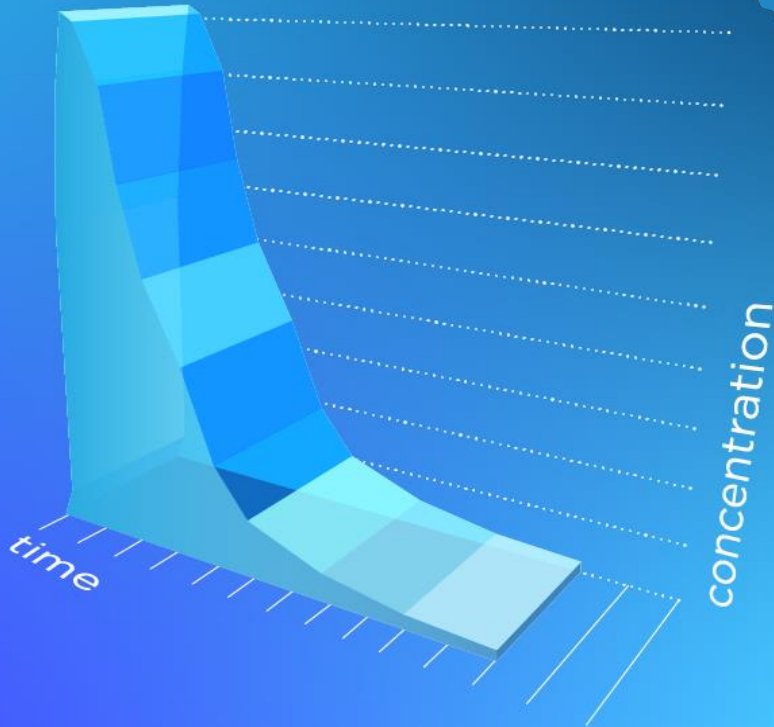
Servicing diverse fields

Vaccines, therapeutics
and diagnostics

- › **Oncology**
- › **Immuno-therapeutics**
- › **Infectious diseases**
Vaccines, Antivirals
- › **Thrombotic diseases**
- › **Neurological disorders**
- › **Respiratory diseases**
- › **Inflammatory and
autoimmune diseases**
- › **And many more...**

Pharmacokinetic (PK)

from simple to complex -
customised to your needs



Small molecules, peptides & small proteins

- › Agilent & Sciex LC-MS/MS systems including
 - › Sciex 7500
 - › 6460 & 6465 triple quad, 6495 high sensitivity triple quad MS
 - › 1290 Infinity II UPLC systems including temp controlled high capacity autosamplers
 - › 6546 LC/Q-TOF for metabolite analysis

Large molecule

- › MSD (chemiluminescence)
- › ELISA (absorbance)

Pharmacodynamic (PD)

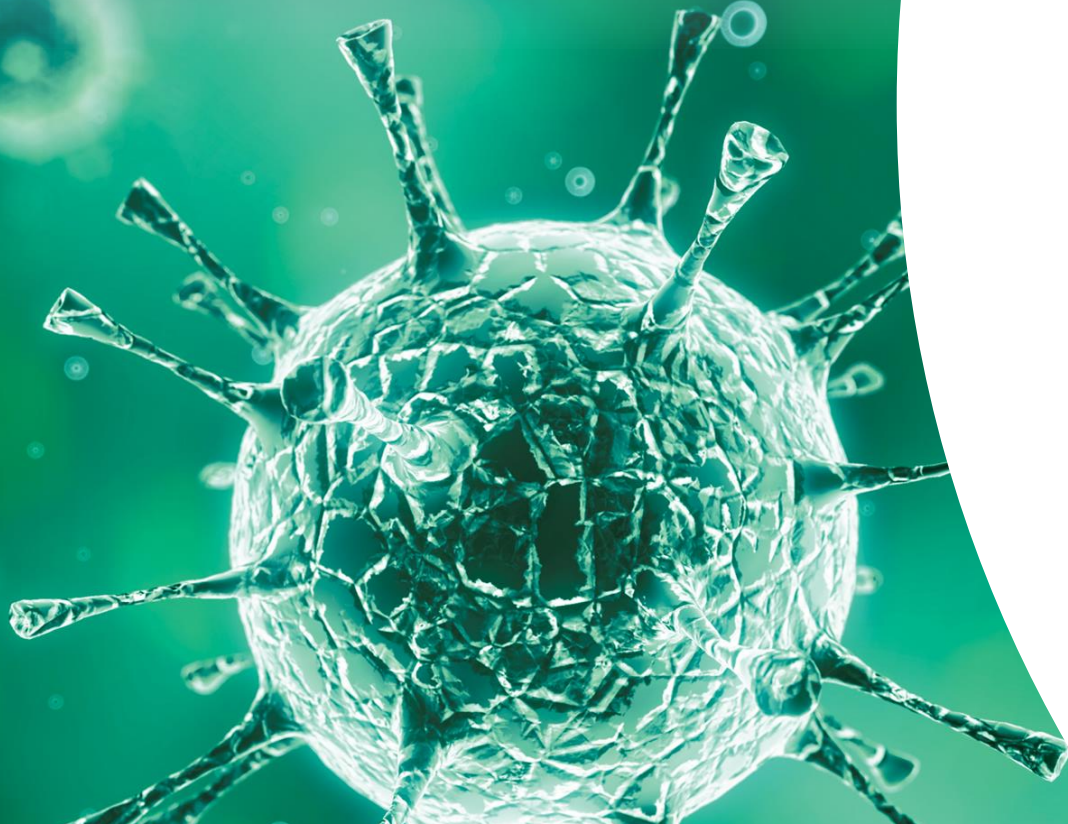
from simple to complex -
customised to your needs

Cell based/immunology

- › Flow cytometry (T, B, NK, Tregs, DCs, RO, customised panels)
- › Biomarker profiling – MSD, ELISA, Luminex, SIMOA
- › ELISA (therapeutic specific development)
- › Anti-drug antibody (ADA)
 - › Screening, confirmatory, titer
 - › Nab cell-based assay development and testing
- › Neutralisation
- › ELISPOT

Pharmacodynamic (PD)

diverse, specialised,
customised



Virology

- › Plaque reduction neutralization test (PRNT)
- › Plaque assay (PA)
- › Quantitative (TCID₅₀) and qualitative culture (flask)
- › Quantitative and qualitative PCR
- › Virus subtyping
- › Hemagglutinin inhibition (HAI)
- › Microneutralization
- › Resistance characterization

Vaccine experience

SARS-CoV-2

- Microneutralisation
- Vaccine specific ELISAs
- qPCR
- Serology (IgA/IgG)
- ELISPOT
- Flow cytometry
- PBMC isolation

Seasonal Influenza

- HAI
- Microneutralisation
- ELISPOT
- Flow cytometry
- PBMC isolation

Respiratory Syncytial Virus

- Vaccine specific ELISA
- PBMC isolation

EV71

- Plaque Reduction Neutralisation Test (PRNT)

Chikungunya

- Plaque Reduction Neutralisation Test (PRNT)

Pertussis

- Vaccine specific ELISAs

Poxvirus

- Microneutralisation

HSV-1

- ELISA
- Flow cytometry
- qPCR
- ADA
- Cytokines

Malaria

- ELISA
- ELISPOT

Peanut allergy

- Basophil Activation Test (BAT)

Adenovirus

Plaque Assay
Microneutralisation

Measles/Rubella

Foci Assay

VZV

ELISA
Flow Cytometry

Zika

- Plaque Reduction Neutralisation Test (PRNT)

Pharmacodynamic (PD)

diverse, specialised,
customised

Molecular

- › Gene expression *via* WB
- › Quantitative and qualitative PCR
- › Genotyping
- › SNP, WGS, NGS
- › SDS-PAGE gel
- › Molecular RACE assays



Central Lab Services

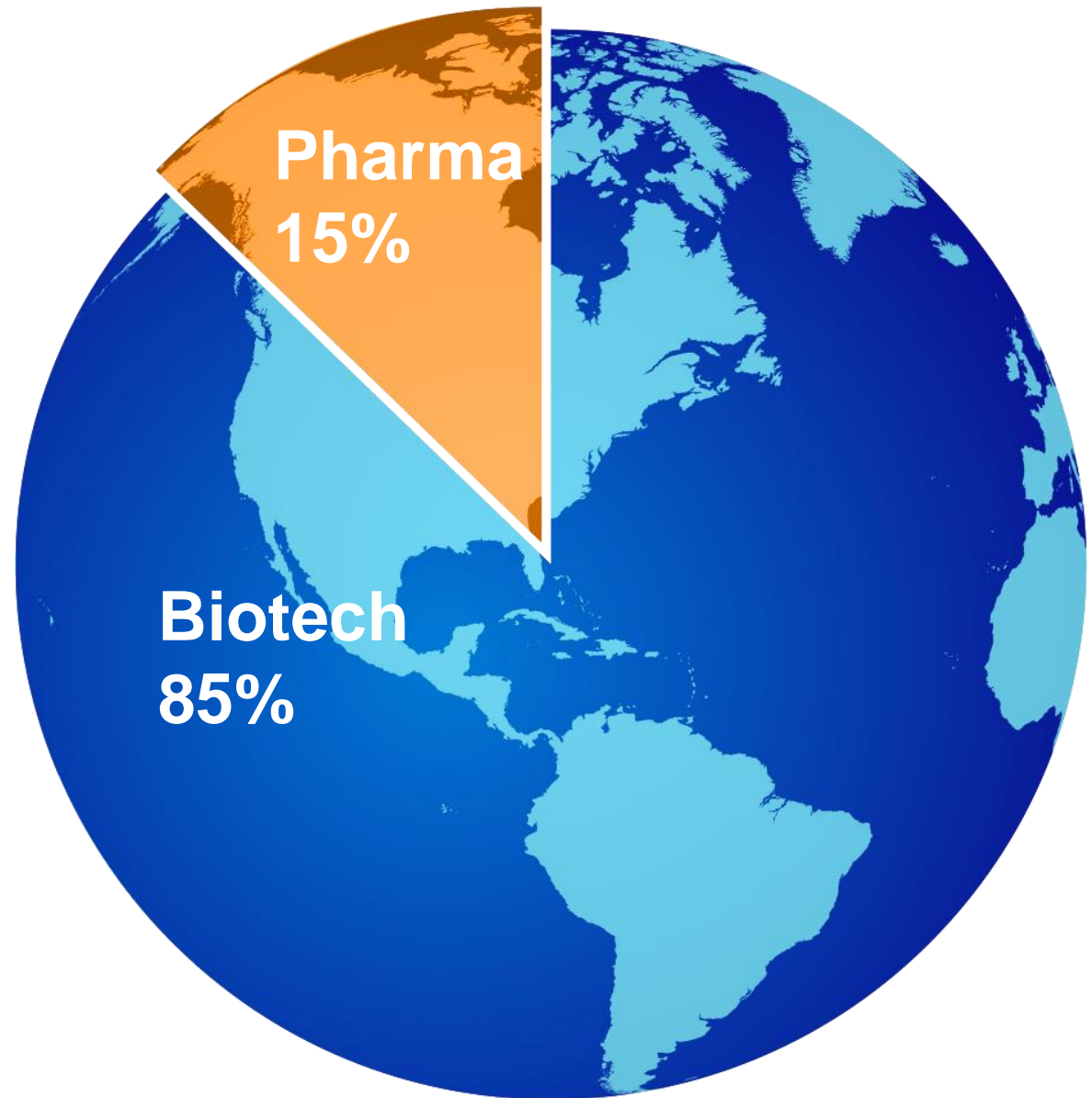
A yellow and black handheld barcode scanner is positioned on a laboratory form. The form contains fields for 'Sample Collection - For Clinic Use Only', 'Site-Patient No.', 'Patient Date of Birth', and 'Date of Collection'. Several small vials with purple and blue caps are visible in the foreground. The background shows a blurred laboratory setting with blue walls and equipment.

- › Laboratory manuals and site training
- › Sample collection kits
- › Clinical sample logistics
- › Sample processing
- › Isolation and cryopreservation PBMC
- › Plasma and serum aliquoting
- › DNA/RNA extraction, quantification, concentration, purity
- › Biobanking – 24/7 monitoring

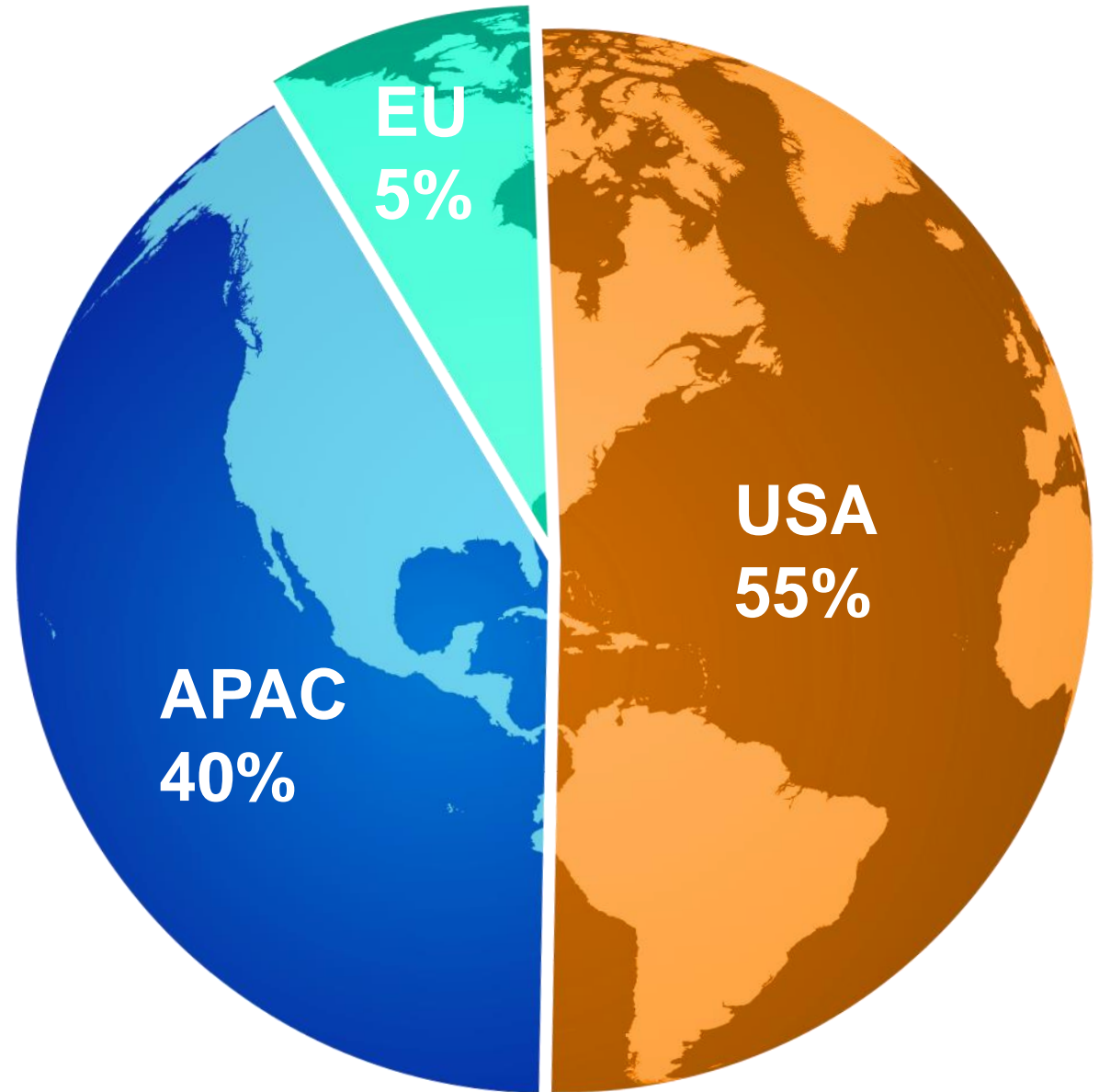
CLS services are only available for clinical studies where 360biolabs is supporting downstream analysis of samples

Our Clients

by type



Our Clients by Country



Excellent locations

A nighttime photograph of the Melbourne city skyline. The image shows a mix of historic and modern architecture. In the foreground, the water of a river or bay reflects the city lights. The middle ground features St. Paul's Cathedral with its prominent spire, and several modern glass skyscrapers. The background is a dark blue twilight sky.

Melbourne, Australia

- › Leading biomedical R&D centre
- › Australia's fastest growing city
- › Within Burnet Institute
- › Phase I unit
- › Within a large hospital and translational medical precinct

Excellent locations



Brisbane, Australia

- › Translational Research Institute (TRI)
- › Leading innovative medical research, development and translation facility
- › Australian-first initiative of “bench to bedside” medical research precinct
- › Situated in the Princess Alexandra Hospital precinct
- › Two specialised Clinical Trial units
- › Close proximity to Phase 1 unit

ONE TEAM. ONE MISSION.

BioAgilytix
laboratories

Europe
HQ
Hamburg

AUS HQ
Melbourne

Brisbane

San Diego

USA HQ
Durham

Boston





The Australian advantage Speed. Quality. Cost.

- › **Fast regulatory environment**
 - › IND not required
- › **Internationally recognised quality systems**
- › **R&D Tax Incentive (43.5%)**
 - › All activities conducted at 360biolabs can be claimed by R&D TI



William Hunter

Sr. Director of Business Development

bd@360biolabs.com

+61 (0) 436 369374

One team. One mission.
ENABLING FUTURE MEDICINES